

# WELCOME

TO YOUR HOME IN THE VILLAGE



[WWW.WESTHORSLEY.INFO](http://WWW.WESTHORSLEY.INFO)



# FROM THE WHPC CHAIRMAN

## Welcome to your new Home!

We hope you will enjoy reading about the facilities and some of the clubs in West Horsley.

**Your Parish Council's Mission:** We continue to exert what pressure we can on the statutory authorities to address local concerns on sustainability and infrastructure.

**Community:** We are progressing to plan to achieve "general competence" status. We have been granted an additional allocation of councillors. We have seen an increase in volunteer participation especially in the Climate Change Task Group and our Village open forums.

**Well-being:** We plan several free events for residents throughout the year which can be found on our website.

**Innovation:** We have increased our level of communications through the printed newsletters, digital bulletin board newsletters, an up-to-date website, and regular postings on Nextdoor, Horsley Hub and Facebook. Our noticeboards

have been replaced and carry more information about the work of the PC. The Gig-a-Bit superfast broadband was installed throughout village and was spearheaded by East and West Horsley Parish Councils.

**Our Youth Council:** is gaining strength with a successful photography competition, a tennis tournament & an outdoor cinema event. We hope to add to these biannual events a summer FUN RUN - The Horsley Hustle.

I can safely say we successfully address our priority lists each year and we hope that you, as a new resident, are able to see first-hand the results and benefits.

A feature of West Horsley is that there is no street lighting. This is one of the aspects of the village that helps preserve its rural character. Policy WH15 of the West Horsley Neighbourhood Plan 2016-33, adopted in December 2018, relates to 'Dark Skies'. In order to improve the quality of our night skies and reduce the negative effect on our communities and wildlife, here are some ideas to help with your home and business lighting. Choose amber lighting on the warm light spectrum, use motion sensors, dimmers and timers on your outdoor lighting, shield all outdoor lights and ideally direct them downward to minimize harmful glare and sky glow.



### CONTACT DETAILS

**Parish Clerk and Responsible Financial Officer:**

Julia McClung, Clerk  
West Horsley Parish Council,  
99 The Street, West Horsley, KT24 6DD  
Tel: 01483 901905, Email: [clerk@westhorsley.info](mailto:clerk@westhorsley.info)

### CREDITS

**Editor:** Vanessa Buosi, [clrbuosi@westhorsley.info](mailto:clrbuosi@westhorsley.info)

**Design and artwork by:** The Creative Workshop,  
01580 212551, [www.tcws.co.uk](http://www.tcws.co.uk)

**Photographic Editor:** Cllr Vanessa Buosi

*The views or opinions expressed do not necessarily reflect those held by WHPC.*

# A BRIEF HISTORY OF WEST HORSLEY

West Horsley is a wonderful historic rural village and gateway to the Surrey Hills located between Guildford and Cobham. Our 500-year-old Oak tree marks the centre of our linear style village and to a network of countryside walks.

West Horsley first appeared in the Domesday book of 1086! West Horsley is the more rural side of the two halves of the ancient Horsleys; it is considered a semi-rural village and boasts a 14th Century Manor House, West Horsley Place, in addition to its beautiful listed and historic houses scattered throughout the village.

Finally, we have an internationally renowned Opera House, Grange Park Opera, "Theatre In the Woods."

## Some interesting facts:

- West Horsley appears in the Domesday Book of 1086 but was burnt to the ground during the Norman Conquest and was then given to the Constable of Windsor Castle.
- King Henry VIII visited West Horsley village to attend a 35-course meal at West Horsley Place. He then beheaded the owner he had bequeathed West Horsley Place to two years later.
- Queen Elizabeth I visited for a week in 1559 and also stayed at West Horsley Place.
- The Duchess of Roxburghe was a Queen Mother's bridesmaid and left West Horsley Place to the late Bamber Gascoigne, TV presenter and quizmaster on University Challenge.
- West Horsley has two amazing historic pubs, The Barley Mow has been serving ale since 1568 (then named The Mount Eagle after the owners of West Horsley Place), and the King William IV has been serving since 1830. Currently under refurbishment.
- One of the first games of cricket was referenced in West Horsley in 1636.



*The old School House now apartments*



*The West Horsley Village Hall*

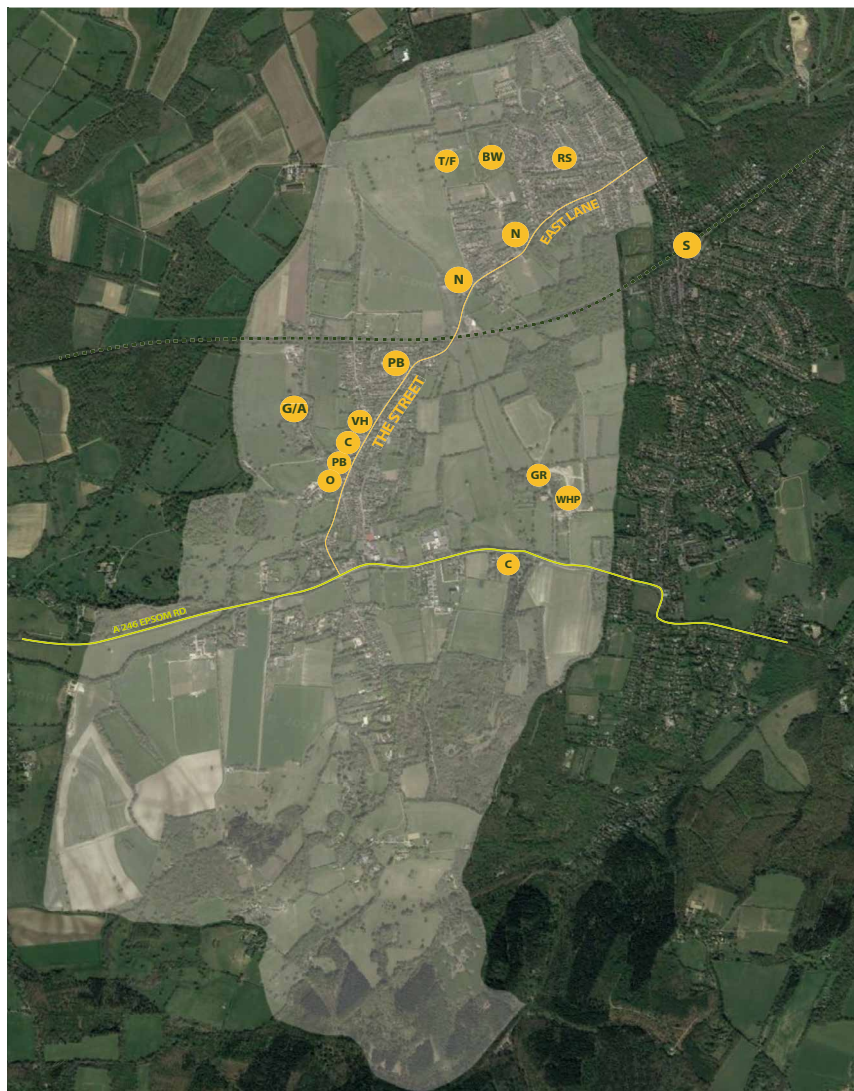
- Beatrix Potter used to stay at a cottage in Woodcote Lodge with her aunt and uncle where she wrote books, as well as creating many of her paintings.

## Area of Outstanding Beauty (AONB) Photo Tranquillity

Natural England have excluded West Horsley from the extension. The Parish Council are working to get WHP included at the current consultation. Please see the Parish Council website where updates will be posted.

[www.westhorsley.info](http://www.westhorsley.info)





- VILLAGE WALKS \*, \*\*
- VILLAGE NOTICE BOARDS (N)
- HORSLEY ALLOTMENTS / GRACE & FLAVOUR (G/A)
- VILLAGE ORCHARD (O)
- VILLAGE TENNIS COURT / FOOTBALL FIELDS (T/F)
- HORSLEY RAILWAY STATION (S)
- PUBS (PB)
- WEST HORSLEY METHODIST CHURCH / ST MARY'S CHURCH (C)
- WEST HORSLEY PLACE / GRANGE OPERA (WHP GR)
- VILLAGE HALL / PLAY GROUND (VH)

\* To download a copy of the Horsley Diamond Jubilee Trail

<https://www.surreyhills.org/wp-content/uploads/2017/02/HJLeaflet-internal.pdf>

\*\* Hatchlands Free walking pass for West Horsley residents. [https://westhorsley.info/Hatchlands\\_40740.aspx](https://westhorsley.info/Hatchlands_40740.aspx)

# VILLAGE FACILITIES & LOCAL SERVICES

## WWW.WESTHORSLEY.INFO

Your Local Parish Council Website.  
Your first port of call and one stop shop for all things related to village life.

## PARISH NOTICE BOARD

See village map for locations of parish notice boards.  
[www.westhorsley.info](http://www.westhorsley.info)

## HORSLEY DIRECTORY

Physical copies are delivered to every home bi-monthly.  
[www.thehorsledirectory.co.uk](http://www.thehorsledirectory.co.uk)

## HORSLEY HUB

Packed full of information on activities for kids, family days out, and what's on. Information and resources on health and emotional wellbeing, both for children and adults.  
[www.horsleyhub.com](http://www.horsleyhub.com)

## HENRY SMITH CHARITY

Historic community charity giving small grants to residents in need.  
[www.henrysmithcharity.org.uk](http://www.henrysmithcharity.org.uk)

## HORSLEY COMMUNITY FUND

Supporting vulnerable local residents, improving local facilities, preserving the villages' heritage, culture and environment.  
[claritaclare@gmail.com](mailto:claritaclare@gmail.com)

## VILLAGE LITTER PICKS

The Horsleys have a litter picking group. The group have around 20 members across East & West Horsley. All ages are very welcome. Equipment can be provided including hi viz jackets, thick gloves, and litter picker sticks. Should you wish to join our merry band and are keen to keep your village litter free, please contact Jane McKenzie on [deputyclerk@westhorsley.info](mailto:deputyclerk@westhorsley.info)



## CHURCH

We have two churches in the village.  
[www.westhorsleymethodistchurch.org.uk](http://www.westhorsleymethodistchurch.org.uk)  
[www.stmaryswesthorsley.co.uk](http://www.stmaryswesthorsley.co.uk)

## HORSLEY MEDICAL PRACTICE

Tel: 01483 284151  
[www.horsleydocs.co.uk](http://www.horsleydocs.co.uk)

## ROYAL SURREY HOSPITAL (A&E)

Tel: 01483 571122  
Egerton Rd, Guildford GU2 7XX

## SCHOOLS

**Footprints Montessori**, Ofstead 'outstanding'  
Long Reach KT24 6LZ, Tel: 01483 285 591

**State primary**  
Raleigh, Ofstead 'Outstanding Provider'  
[www.theraleigh.org](http://www.theraleigh.org)

**State secondary**  
The Howard of Effingham, Ofstead 'Good'  
[www.thehoward.org](http://www.thehoward.org)

## WHEEL OF CARE

West Horsley's Wheel of Care, which has been going for 23 years, has recently joined forces with East Horsley's, to become 'Horsley Wheel of Care'. It is a "good neighbour" charity, helping residents who need assistance by providing transport to appointments, house visits or other supportive activity. It also runs two clubs: seated exercise and scrabble. The clubs provide a chance to socialise over a cup of tea and cake. We also welcome new volunteers. For information, please call our Duty Officer on 07788 552767 between 10am and 12 noon Monday to Friday or visit the website. Duty Manager Tel: 07788 552767



# VILLAGE FACILITIES & LOCAL SERVICES

## WEST HORSLEY DELI & STORE

The Charcuterie Box Deli & Store, which opened last December at 10 The Street, West Horsley, is a great new addition to the village. Here you'll find an extensive selection of the finest, Best of British cured meats, all freshly sliced to order on-site, alongside award-winning and traditionally made cheeses, fine wines, and other treats to tempt you. The store also stocks everyday essentials, including fresh bread and local milk and eggs, on-the-go deli snacks and sandwiches, freshly brewed coffee, plus a range of other delicious, locally sourced produce that you'll love to discover. They also take pre-orders for all their cured meats, cheeses and wines, and can create bespoke hampers and platters for you to enjoy at home or as gifts. For further information please contact Paul on Tel: 01483 280020.

[paul@thecharcuteriebox.co.uk](mailto:paul@thecharcuteriebox.co.uk)  
[www.thecharcuteriebox.co.uk](http://www.thecharcuteriebox.co.uk)  
Facebook/Insta - @charcuterieboxc

'Best of British' supplying items from many talented food producers and chefs from around the British Isles.

**The Charcuterie Box**, Deli & Store, 10 The Street, West Horsley, Leatherhead, KT24 6AX



For further updates about your Village please join the Parish Council's mailing list.



## WEST HORSLEY BUSINESS

**Artichoke Interior Designs**  
[www.artichokeinteriordesigns.co.uk](http://www.artichokeinteriordesigns.co.uk)  
Tel: 07910 325187

**Beauty Barn Clinic**  
[www.beautybarclinic.co.uk](http://www.beautybarclinic.co.uk)  
Tel: 01483 285971

**Bramble Farm Turkeys**  
[www.bramblefarm.co.uk](http://www.bramblefarm.co.uk)  
Tel: 01483 282548

**Milloe Soft Furnishings**  
[www.milloe.co.uk](http://www.milloe.co.uk)  
Tel: 01483 283291

**Squire's Garden Centre West Horsley**  
[www.squiresgardencentres.co.uk](http://www.squiresgardencentres.co.uk)  
Tel: 01483 282911

**Tia Ltd (Architecture & Design)**  
[www.tia-ltd.com](http://www.tia-ltd.com)  
Tel: 01483 285964

**Stovell - Specialist Joinery**  
[www.bystowell.com](http://www.bystowell.com)  
[hellobystovell.com](http://hellobystovell.com)

**Hookwood Chiropractic Clinic**  
[www.hookwoodchiropractic.co.uk](http://www.hookwoodchiropractic.co.uk)  
Tel: 01483 808081

**West Horsley Dental Practice**  
[www.westhorsleydental.com](http://www.westhorsleydental.com)  
Tel: 01483 280030

**Dene Place Care Home - Bupa**  
[www.bupa.co.uk](http://www.bupa.co.uk)  
Tel: 01483 604489

**Bell & Colvill (Horsley)**  
[www.bellandcolvill.co.uk](http://www.bellandcolvill.co.uk)  
Tel: 01483 281000

**CT Cars**  
[www.ctcarsltd.co.uk](http://www.ctcarsltd.co.uk)  
Tel: 01483 285792

**West Horsley Motors**  
[www.westhorsleymotors.co.uk](http://www.westhorsleymotors.co.uk)  
Tel: 01483 286000



**West Horsley  
Parish Council**

# USEFUL CONTACT INFORMATION

## NEIGHBOURHOOD POLICING TEAM

Tel: 101  
[guildford@surrey.police.uk](mailto:guildford@surrey.police.uk)

## GBC REFUSE COLLECTION

Tel: 01483 505050  
[www.guildford.gov.uk](http://www.guildford.gov.uk)

## SLYFIELD RECYCLING CENTRE

Tel: 01483 532187

## GUILDFORD BOROUGH COUNCIL

[www.guildford.gov.uk](http://www.guildford.gov.uk)

## WATER LEAKS

Tel: 0345 3572407

## GAS LEAKS

Tel: 0800 11 19 99

## ELECTRICITY POWER CUTS

Tel: 0800 31 63 105 or 105 (mobile)  
[www.ukpowernetworks.co.uk](http://www.ukpowernetworks.co.uk)

## FLOODING AND WATERWAYS

[www.gov.uk](http://www.gov.uk) (Environment Agency)

## ENVIRONMENT INCIDENT HOTLINE

Tel: 0800 80 70 60  
[www.gov.uk](http://www.gov.uk)

## SURREY COUNTY COUNCIL

[www.surreycc.gov.uk/do-it-on-line](http://www.surreycc.gov.uk/do-it-on-line)

## SCC HIGHWAYS, ROADS & TRANSPORT

[www.surreycc.gov.uk/roads-and-transport](http://www.surreycc.gov.uk/roads-and-transport)

## FLOODLINE

Tel: 0345 988 1188

## PARISH COUNCIL GRANTS

Every year the Parish Council gives grants to organisations who provide services within West Horsley. If your organisation would like to be considered, please contact the Clerk for an application form – [clerk@westhorsley.info](mailto:clerk@westhorsley.info)

## LOCAL TRANSPORT

Horsley Railway Station is located in the village of East Horsley, 22 miles from London Waterloo. It also serves the villages of West Horsley, Ockham and Ripley; managed by South Western Railway. There is a limited service by bus from the Village to Guildford or Leatherhead. Please check the timetables online.

During weekdays only there are buses 478, 479 and the 678 school bus which stop at various locations through West Horsley. Please see <https://bustimes.org/localities/west-horsley> for times and locations.

Uber Taxi's do operate to West Horsley however they can be unpredictable.

## THE HORSLEY COMMUNITY BUS

Anyone requiring transport can use this. We ask for a donation of £5 as contribution towards running costs of the bus. To book contact Kelvin on 01483 283314 or 07530 167283.



# HORSLEY CLUBS & ACTIVITIES

## CLUBS

University of the Third Age (U3A)

[www.horsleyu3a.org.uk](http://www.horsleyu3a.org.uk)

East Horsley Women's Institute

Helen Taylorson Tel: 01483 283577

West Horsley Evening Women's Institute

Sue Stratford Tel: 01483 281669

West Surrey Natural History Society

Tel: 01372 457623

The Probus Club of the Horsleys

David Lush Tel: 01483 280267

Rotary Club of Bookham & Horsley

Mark Secker Tel: 01372 458733

Horsley Countryside & Preservation

[www.hcps.online](http://www.hcps.online)

East Horsley Bridge Club

[www.bridgewebs.com/easthorsley](http://www.bridgewebs.com/easthorsley)

Horsley Floral Decoration Group

Ruth Farmer Tel: 01483 202440

Horsley Garden Society

Roger Lindsay Tel: 01483 282408

Beehive Craft Group

[www.easthorsleychurch.org.uk](http://www.easthorsleychurch.org.uk)

Wheel of Care Social & Exercise Clubs

Duty Manager Tel: 07788 552767

## DRAMATICS & CHORAL

The Nomad Theatre

[www.nomadtheatre.com](http://www.nomadtheatre.com)

The Whips Players

[www.whipstheatre.org](http://www.whipstheatre.org)

Horsley Choral Society

[www.horsleychoralsociety.com](http://www.horsleychoralsociety.com)



## SPORTS & ACTIVITIES

Sports facilities & Skatepark

Kingston Meadow, Kingston Avenue

The Horsley Shufflers – running group

[www.facebook.com/HorsleyShufflers](https://www.facebook.com/HorsleyShufflers)

Horsley Football Club, West Horsley

[www.horsleyfc.co.uk](http://www.horsleyfc.co.uk)

Effingham and Leatherhead RFC

<https://eaglesrugby.club>

West Horsley Community Club Snooker & Pool

Robert Elliott Tel: 07702 922217

Effingham Table Tennis Club

Tim Hobbs Tel: 01372 452197

Horsley Tennis Club

[www.horsleysportsclub.com](http://www.horsleysportsclub.com)

Horsley Badminton Club

[www.horsleybadminton.co.uk](http://www.horsleybadminton.co.uk)

Horsley Cricket Club

[www.horsleysportsclub.com](http://www.horsleysportsclub.com)

Effingham Cricket Club

[www.effinghamcc.co.uk](http://www.effinghamcc.co.uk)

Horsley and Send Cricket Club

[www.horsleyandsendcc.co.uk](http://www.horsleyandsendcc.co.uk)





## YOUTH ACTIVITIES

**Beavers, Cubs, Scouts & Explorer Scouts**

[www.firsthorsley.co.uk](http://www.firsthorsley.co.uk)

**4th Horsley Brownies**

[horsleybrownies@yahoo.co.uk](mailto:horsleybrownies@yahoo.co.uk)

**1st West Horsley Brownies**

[westhorsleybrownies@gmail.com](mailto:westhorsleybrownies@gmail.com)

**1st Horsley Guides**

Karlenne Peach Tel: 01483 224692



## ARTS

**Horsley & Clandon Society of Arts**

Robyn Cormack Tel: 01483 224063

**Horsley Craft Group**

Jody Fern Tel: 01483 284437

**The Arts Society Horsley**

[www.theartssocietyhorsley.org.uk](http://www.theartssocietyhorsley.org.uk)

**The Arts Society Horsley Lovelace**

[www.theartssocietyhorsleylovelace.org.uk](http://www.theartssocietyhorsleylovelace.org.uk)

**Adam Aaronson Glass Studio**

West Horsley has a wonderful glass blowing studio of 2,400 sq ft. Adam Aaronson Glass Studio, Foxbury Barn, Epsom Road, West Horsley KT24 6AR, is located on the A246 (Epsom Road) midway between Leatherhead and Guildford, adjacent to Squire's Garden Centre, on the west side of the road. (NB SATNAV takes you to the wrong place!)

[www.adamaaronson.com](http://www.adamaaronson.com)



## SHEEPLEAS

At first sight, Sheepleas feels like a typical patch of Surrey woodland. But go a bit deeper and you'll uncover a few surprises. One of the original 284 Rothschild Reserves, Sheepleas was once described as 'the finest piece of botanical and entomological ground within 30 miles of London'. In a Area of Outstanding Natural Beauty the southern tip of West Horsley is an excellent viewpoint over London and wonderful place to walk at all times of year.



## BENSWOOD

Planted in December 2001, this area has blossomed and is now a lovely wooded area to walk and enjoy the landscape. Although Manor Farm originally donated this area, and building works are being carried out in the vicinity, the wood remains intact and available to all to use once the building works have been completed. Please see our website for up-to-date information.



## ANCIENT WOODLAND

Within West Horsley, the West Horsley Place Estate has areas of ancient woodland that are over 400 years old. They run along the length of West Horsley boundary to the East Horsley Kingston Meadows boundary. Over 31 ancient woodland indicator species have been recorded in the woodlands, including Early Purple-orchid, Pignut and Field Rose. This is a high number of indicator species as generally fifteen or more ancient woodland indicators would indicate a woodland is likely to be ancient in origin. The ancient woodland is designated as a Site of Nature Conservation Importance (SNCI). There are also archaeological features including a series of three mediaeval fishponds. Another wonderful area to book a guided tour.

## HORSLEY MEADOWS

An area created from funds from developers in Effingham. West Horsley now has its own SANG (Suitable Alternative Natural Greenspace). It is surrounded by extra planting which is maturing well. It is managed by Surrey Wildlife Trust on behalf of the Land Trust. WHPC are involved with this together with HCP. Great for viewing the Sunsets towards Hatchlands.



## GRANGE PARK OPERA

In 2017, Grange Park Opera relocated to West Horsley Place, Surrey.

In eleven months, Wasfi Kani and her team built a five-storey opera house modelled on La Scala, Milan, seating 700. The Times Arts Awards acknowledged the achievement as the “fastest construction of an opera house in history”. The opera house, glimpsed amongst the trees, appears as a cross-gartered brick drum and within is an intimate five-tiered auditorium. The audience – invariably, but not exclusively in black tie and cocktail dresses wander through the historic walled gardens where a convivial atmosphere reigns. Dining in the long interval takes place in the 14th century house or Guests can picnic in Indian pavilions in the Crinkle-Crankle garden or on the Croquet Lawn. And when the opera ends, the audience walks out into a magical English landscape...Theatre in the Woods, West Horsley Place, KT24 6AN, Box office 01962 737373, [www.grangeparkopera.co.uk](http://www.grangeparkopera.co.uk)



## WEST HORSLEY PLACE

West Horsley Place is a Grade I listed mediaeval manor house and estate of great beauty and historic significance. The manor house dates from 1425, though there has been a building on site since Saxon times. The recent work to conserve and maintain the house has made the principal rooms safe and comfortable for public access, but the house remains on Historic England's Heritage at Risk Register. The West Horsley Place Trust aims to bring the house, gardens, 380-acre estate and eight Grade II listed outbuildings back into good repair and to improve people's wellbeing through art, culture, heritage & nature. It will give people freedom to explore and discover, and to create stories. WHP is open to booked visitors from April onwards. Details of tours, Open Days and all special events are listed under 'What's On' [www.westhorsleyplace.org](http://www.westhorsleyplace.org) 01483 282032.





## FOOTBALL CLUB

Horsley FC is a community football club based on Long Reach, West Horsley. We are one of the largest clubs in Surrey, entirely run by volunteers, and have a thriving youth section with almost 50 teams and over 600 players from starting at U6 and going through to U18. Off the pitch we have a clubhouse serving a good selection of beers and hot and cold soft drinks and our bar steward Les would be delighted to welcome you on a Saturday afternoon to cheer on our men's teams or on Sunday afternoons when Guildford City Ladies FC play their home games in the Surrey Women's Football League. If you have any questions about the club or its facilities, please contact [clubsecretary@horsleyfc.co.uk](mailto:clubsecretary@horsleyfc.co.uk) and we hope to see you at Tom's Field soon! Follow us on Twitter for up-to-date fixture and event information [@Horsley\\_FC](https://twitter.com/Horsley_FC)

## LOCAL GOLF CLUB - THE DRIFT

The New Driving Range and Academy at the Drift Golf Club, offers all ability golfers within the local community the opportunity to learn, practice and play. A new café and terrace, it is the perfect place for anyone to come down and grab a coffee or a bite to eat, enjoy the new surroundings and the great game of golf. The new facility is also supplemented by the established clubhouse which offers a range of high-quality dining experiences and a great sundowner patio to make the most of the longer Spring evenings. Everyone is welcome, if you would like further details about the club, please contact the club directly or simply pop down. [www.driftgolfclub.com](http://www.driftgolfclub.com)

## CRICKET CLUB

Horsley & Send CC is a local family club dating back to 1896 offering cricket with professional coaching for all ages of boys and girls Under 5 through to adults. The club runs 4 senior sides and has 24 colts teams playing over 250 matches throughout the summer providing plenty of cricket for our 400+ playing members. We are an ambitious club with intentions to grow membership, encourage our adult teams to challenge for promotions and are constantly looking to improve our facilities. The ground has two squares, a modern pavilion and bar, and 4 newly laid practice nets. We are your local community cricket club and wish to remind you

that we offer social membership for locals at a rate of £10 per annum for those wishing just to watch a game whilst having a Pint or Pimms from the Bar.



## VILLAGE TENNIS COURT

West Horsley Parish Council maintains a tennis court for the benefit of its residents. The tennis court is located in Long Reach, West Horsley, next to the football club. There are no charges for non commercial use of the tennis court. Priority over the use of the court is given to those that have a booking which can be done via our website. For commercial bookings please contact [clerk@westhorsley.info](mailto:clerk@westhorsley.info) [www.westhorsley.info/Tennis\\_Court\\_25152.aspx](http://www.westhorsley.info/Tennis_Court_25152.aspx).





## ORCHARD

The Village Orchard is a tiny but crucial open space in our village. It is an amenity for us all to use and enjoy. During the past we have had a number of very successful events held there including a Teddy Bears' Picnic, Carol Singing and a Lantern Procession at Christmas and Easter Egg Painting Fun, and summer Youth Council meetings!. The WI also hold a summer tea party and picnics at the orchard too. The Village Orchard is yours to use as you will. Perhaps a simple family picnic, a birthday party or just to pick the fruit in the jam making season. It is all there for us all. It is strictly a dog free area, closed either end by substantial gates, so safe for children to run around in. The Orchard is patrolled regularly by four ladies, known as the Orchard Guardians, who keep an eye on things and report to the Parish Council if there is anything needing attention. Alternatively contact [clerk@westhorsley.info](mailto:clerk@westhorsley.info)

## VILLAGE GREEN

At the middle of this linear village is our 500 year old oak marking our official village green. With new benches to sit on and rest it is an entry point to some amazing countryside walks such as The Horsley Jubilee Trail. These are shown on our notice board at its entrance.



## VILLAGE HALL & PLAYGROUND

The Village Hall is situated in the centre of the village and hosts every kind of function, from the monthly meetings of the Parish Council to children's birthday parties. Regular hirers are The WHIPS (drama group), the W.I., various fitness classes, choirs, handicraft sessions, the Horticultural Society's shows and talks, adult and children's dancing classes and all kinds of private parties. There are two halls in the complex, joined by an internal foyer. The larger main hall was built in the 1920s with a major extension in the 1960s and the smaller Cedar Room in the 1960s; both have modern kitchen and cloakroom facilities, as well as access for the disabled. There is also a small room (The Rubin Room) suitable for about a dozen people at a meeting.

01483 285454 or

[whvhbooking@gmail.com](mailto:whvhbooking@gmail.com)

[www.westhorsleyvillagehall.org](http://www.westhorsleyvillagehall.org)

Julia Reardon Smith, WHVH Manager



### PLAYGROUND

Adjacent to the Cedar Room is a children's playground which is very well used, is safely fenced, and has seating for parents too. It will be closed during evening hours.

## ST MARY'S CHURCH

At St Mary's we try to help people grow in their faith wherever they are starting from, engage with their doubts, and live it out with confidence and good grace. We have groups for people of all ages, whether you're 1 or 101. For more information, call us in the Parish office on 01483 281898.

Rev Phil Herrington, Rector

[philherrington@stmaryswesthorsley.co.uk](mailto:philherrington@stmaryswesthorsley.co.uk)

[www.stmaryswesthorsley.co.uk](http://www.stmaryswesthorsley.co.uk)



## WEST HORSLEY METHODIST CHURCH

The Chapel is situated on The Street, next to the village hall. For further information please call 01483 575432 or email on

[westhorsleymethodist@gmail.com](mailto:westhorsleymethodist@gmail.com)

Bob Spackman

[www.westhorsleymethodistchurch.org.uk](http://www.westhorsleymethodistchurch.org.uk)



## GRACE & FLAVOUR VILLAGE ALLOTMENTS

The Horsleys Community Kitchen Garden & Allotments was founded in 2009 by Su Johnston of West Horsley. From July to September, as in previous years, a tithe from the garden is distributed each week throughout West Horsley by The Wheel of Care to the elderly in the village. As Garden manager, I have in recent years achieved the ambition of having vegetables, and fruit when in season. You can enter from Ripley Lane. These allotments are managed by Grace and Flavour for East and West Horsley Parish Councils. The garden always welcomes new members. Some people come every week, while others come whenever they can. The joys of a community garden are the opportunity to eat fresh organic vegetables and fruit, to relax, keep fit and socialize with a wide range of people.

John Whitlock, Head Gardener Grace and

Flavour <http://graceandflavour.org/index.php>

If you are a West Horsley resident, to get your name on the waiting list for an allotment at Grace & Flavour please email

[clerk@westhorsley.info](mailto:clerk@westhorsley.info) with your name,

address and telephone number. This will be passed on and you will be contacted in due course.

[www.graceandfavour.org](http://www.graceandfavour.org)

**Grace + Flavour**



# THE WEST HORSLEY YOUTH COUNCIL (WHYYC)

The Parish Council has always tried its best to listen to the requests, complaints or suggestions or improvements as offered by our village residents. Hence, we now have a YOUTH COUNCIL. Visit our website to watch Joe Wicks congratulate our founder Youth Council members at [www.westhorsley.info/Youth\\_Council\\_38458.aspx](http://www.westhorsley.info/Youth_Council_38458.aspx)

The Youth Council echoes the Full Council in that they have an elected Chairman, Clerk and Finance Officer. We hope that not only will this offer a real voice to the youth of the community but help them understand the difference you can make within your own community as a councillor. Under our guidance, we hope that they will grow with confidence and have a relevant and influential place in our community. West Horsley Place is keen for our Youth Council to work with them to plan and add future events and schemes alongside their youth goals. In the meantime, they have already run Photography, Tennis and Outdoor Cinema events. Now hoping to launch a biannual fun run in the summer.

We believe it is a great experience they can take forward to the next stages in their education and careers. If you are interested in joining the Youth Council and are aged between 13-18 years please contact:

Vanessa Buosi - [cllrbuosi@westhorsley.info](mailto:cllrbuosi@westhorsley.info) or  
Mel Beynon - [cllrbeynon@westhorsley.info](mailto:cllrbeynon@westhorsley.info)



 **West Horsley  
Youth Council**



# TASK GROUPS OF THE PARISH COUNCIL

## COMMUNICATIONS

The team have launched a digital e-bulletin newsletter. Don't forget to sign up to our mailing list to receive it! After the success of the small exhibition of old postcards of West Horsley & its houses, we are hoping to launch postcards and prints for purchase. The proceeds go to the Youth Council to support free events for the younger community within the village.

Vanessa Buosi - [cllrbusoi@westhorsley.info](mailto:cllrbusoi@westhorsley.info)

## ROAD SAFETY & MAINTENANCE

We understand everyone's concerns about the heavy construction vehicles damaging our roads. We review and monitor roads conditions and also report accordingly. However, the more individuals report any issues online, the faster the issues get resolved. So should you notice flooding, pothole or pavement damage please report it at [www.surreycc.gov.uk/do-it-online/report-it-online](http://www.surreycc.gov.uk/do-it-online/report-it-online) In addition, if you have any concerns and have trouble reporting please contact our deputy clerk on

[deputyclerk@westhorsley.info](mailto:deputyclerk@westhorsley.info)

CLlr Peter Colbourne-Baber –

[CLlrcolborne-baber@westhorsley.info](mailto:CLlrcolborne-baber@westhorsley.info)

## ASSET & APPEARANCE

Responsible for the maintenance and appearance of the Village & its Assets, the Village is looking well. The makeover of the Village Green has been completed and now provides additional recreation space. The Orchard restoration project is complete and once the roses grow around the entrance arch it should look splendid at the heart of our Village. The refurbished tennis court is attracting an increased number of users, and we are currently exploring the possibility of installing low level floodlights to provide extended evening use during the winter months.

Tony Rogers – [cllrrogers@westhorsley.info](mailto:cllrrogers@westhorsley.info)

## FINANCE

Finance Task Group was transformed into a Committee, the meetings and agendas are published on the Parish Council website and on the village noticeboards, the public and

press can attend. The meetings are normally quarterly. The main activity of the Finance Committee is the preparation and management of the budgets, as well as monitoring the spend of the Parish Council.

Frances King – [cllrking@westhorsley.info](mailto:cllrking@westhorsley.info)

## CLIMATE CHANGE

West & East Horsley Parish Councils continue to work closely together to engage with our local community, raising awareness of the issues of climate change and ecological harm. Please visit our website for our initiatives which are supported by a growing number of resident volunteers [https://www.westhorsley.info/Climate\\_Change\\_41028.aspx](https://www.westhorsley.info/Climate_Change_41028.aspx). Or follow our volunteer resident's group on Facebook and Instagram under the name 'The Horsley's Climate Action Network' <https://www.facebook.com/groups/1461305921061387/>. Catherine Young – [catherine.young@guildford.gov.uk](mailto:catherine.young@guildford.gov.uk)

## COMMUNITY

Responsible for arranging free community engaging events across the age groups, we have something for everyone across the seasons. From Royal events to The West Horsley Village Garden Party and many more. You can find up to date details of our calendar of events on the West Horsley Parish website. Mel Beynon – [cllrbeynon@westhorsley.info](mailto:cllrbeynon@westhorsley.info)

## PLANNING

Also, a Committee where the meetings and agendas are published on the Parish Council website and on the village noticeboards, the public and press can attend. We monitor and support or reject planning applications around the village hoping to project our village look and feel as best we can. In addition, liaising with GBC and fighting the increase of additional homes in the village to avoid burdens on our infrastructure. Please also ensure that if you are planning any extensions or alterations to your own home that you refer to the West Horsley Neighbourhood Plan – available via [www.westhorsley.info](http://www.westhorsley.info).

Guy Murray – [cllrmurray@westhorsley.info](mailto:cllrmurray@westhorsley.info)



## PARISH COUNCIL CONTACTS



**ELAINE BEST**  
Chairman  
[chairman@westhorsley.info](mailto:chairman@westhorsley.info)



**FRANCES KING**  
[cllrking@westhorsley.info](mailto:cllrking@westhorsley.info)



**MEL BEYNON**  
[cllrbeynon@westhorsley.info](mailto:cllrbeynon@westhorsley.info)



**VANESSA BUOSI**  
[cllrbuosi@westhorsley.info](mailto:cllrbuosi@westhorsley.info)



**CAROLE MATTOCK**  
[cllrmattock@westhorsley.info](mailto:cllrmattock@westhorsley.info)



**PAUL DODGSON**  
[cllrdodgson@westhorsley.info](mailto:cllrdodgson@westhorsley.info)



**GUY MURRAY**  
[cllrmurray@westhorsley.info](mailto:cllrmurray@westhorsley.info)



**PETER COLBORNE-BABER**  
[cllrcolborne-baber@westhorsley.info](mailto:cllrcolborne-baber@westhorsley.info)



**TONY ROGERS**  
[cllrrogers@westhorsley.info](mailto:cllrrogers@westhorsley.info)



**JANE MCKENZIE**  
Deputy Clerk  
[deputyclerk@westhorsley.info](mailto:deputyclerk@westhorsley.info)



**JULIA MCCLUNG**  
Clerk & RFO  
[clerk@westhorsley.info](mailto:clerk@westhorsley.info)

For more information about village life and details of community events, please visit the West Horsley Parish Council website below.



**WWW.WESTHORSLEY.INFO**